

WOOD STOVES BY
IRONSTRIKE[®]
HEAT FOR LIFE

THE GREAT INDOORS



HARD WORKING HEAT

Because that's the only way to work.

The toughest jobs are often the most rewarding. And at the end of every day, that's what matters.

Hard work inspired the IronStrike brand. The IronStrike name signifies a product that is made to perform, built to last a lifetime and as efficient as you are. It's our way of making life simpler and a lot more enjoyable. Because coming home should be the easy part.

So go ahead—make yourself comfortable. You've earned it.



Grandview™ 230 stove shown with Brushed Nickel door trim and Brushed Nickel louvers.









START A NEW TRADITION

One of leaving your footprints in the snow, not on earth. All of Ironstrike's wood burning stoves are EPA certified. That means you can save money on fuel costs while lowering your impact on the world.

FOR THOSE WHO PREFER A NATURAL FUEL SOURCE.



Grandview™ 230 stove shown with Brushed Nickel door trim and Black louvers.

THERMAL FIN TECHNOLOGY (TFT™)

As elegant as it is efficient, the Grandview™ Series of wood burning stoves has raised the standard for home heating with its proven, Thermal Fin Technology (TFT™). This innovative cast-iron heat exchanger delivers the perfect amount of heat.

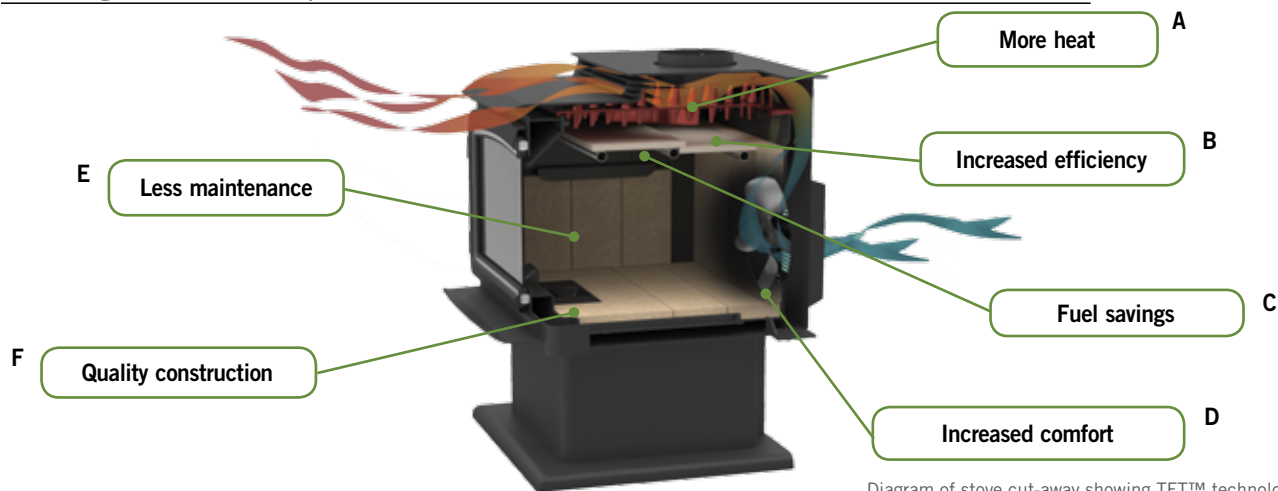


Diagram of stove cut-away showing TFT™ technology at work.

- A. More Heat** – heat exchanger provides 32% more surface area than standard stove designs.
- B. Increased Efficiency** – ceramic baffle holds heat in the firebox longer, resulting in high efficiency.
- C. Fuel Savings** – secondary combustion system and cast-iron heat exchanger combine to extract more heat out of every log.
- D. Increased Comfort** – optional 700-CFM variable-speed blower helps heat larger spaces.
- E. Less Maintenance** – airwash system forces high-velocity air across the glass, keeping it clean.
- F. Quality Construction** – heavy-gauge steel assembled and welded by our experienced craftsmen equals industry-leading quality and years of dependable performance.

GRANDVIEW 300 LARGE

This Grandview™ includes Thermal Fin Technology (TFT™), which is proven to provide more heat without needing any more fuel. That means more time to focus on what really matters.

LOG LENGTH: 20" max.

HEATING CAPACITY: 2,000-3,000 square feet

MAXIMUM OUTPUT: 100,000 BTUs/hour

HEAT TRANSFER EFFICIENCY: 82%

Grandview 300 shown on a pedestal with Brushed Nickel door trim.



GRANDVIEW 230 MEDIUM

A harmonious blend of innovation and style come together in this stove. It is designed to deliver the ultimate in efficiency. The expansive, durable ceramic glass area provides a stunning view of the fire from the embers to the flames.

LOG LENGTH: 18" max.

HEATING CAPACITY: 1,200–2,000 square feet

MAXIMUM OUTPUT: 76,000 BTUs/hour

HEAT TRANSFER EFFICIENCY: 84%

Grandview™ 230 stove shown with Brushed Nickel door trim, Brushed Nickel louvers and Brushed Nickel Coastal legs.



LIKE WHAT YOU SEE?

Visit us online at www.IronStrike.us.com



Legacy™ S260 shown with Brushed Nickel door and Brushed Nickel Olympic Legs.

COUNTRY COLLECTION

The Country™ Collection wood-burning stoves offer the ultimate in clean-burning, reliable heat to warm your home and your family. In addition, every wood stove is built with premium-grade materials and the utmost commitment to quality. Each stove is customizable with an array of options to fit your needs.



CANYON ST310 X-LARGE

The Canyon™ ST310 is the perfect stove to heat larger homes, with the ability to warm up to 3,500 square feet with burn times of 7–12 hours. To add your distinctive style, the Canyon can be customized with door, trim, and blower options for a perfect, personalized appearance.

LOG LENGTH: 22.5" max.

HEATING CAPACITY: 2,000–3,500 square feet

MAXIMUM OUTPUT: 84,500 BTUs/hour

EFFICIENCY: 77.9%

Canyon™ ST310 shown with Traditional Nickel-plated door and Nickel-plated Olympic Cast legs.



LEGACY S260 LARGE

The Legacy™ S260 is designed with convenience and high-heating capacity in mind. Blending outstanding heating with unique T-top styling, the Legacy has the ability to heat up to 2,500 square feet. And to add your distinctive style, it can be customized with options for a perfect, personalized appearance.

LOG LENGTH: 22.5" max.

HEATING CAPACITY: 1,600–2,500 square feet

MAXIMUM OUTPUT: 79,000 BTUs/hour

EFFICIENCY: 79.2%

Legacy™ S260 shown with Traditional Door with brushed nickel finish and Standard Black Cast Olympic legs.

PERFORMER ST210 MEDIUM

The Performer™ is one of the most versatile wood stoves in the Country™ Collection. Their elegance and engineered simplicity make them a pleasure to burn and a large cooktop surface allows for food preparation – even during power outages.

LOG LENGTH: 20" max.

HEATING CAPACITY: 1,200–2,000 square feet

MAXIMUM OUTPUT: 76,000 BTUs/hour

EFFICIENCY: 85%

Performer™ ST210 shown with Arch Brushed Nickel door and Black Olympic legs.



STRIKER S160 SMALL

The classic styling of the Striker™ S160 is surpassed only by its performance. The smallest wood stove of the group and one of the cleanest-burning non-catalytic stoves in the world, the Striker provides a lot of heat with very low emissions.

LOG LENGTH: 18" max.

HEATING CAPACITY: 700–1,400 square feet

MAXIMUM OUTPUT: 68,000 BTUs/hour

EFFICIENCY: 78.6%

Striker™ S160 shown with Standard Pedestal and Traditional nickel-plated door.



CUSTOMIZE YOUR STOVE

GRANDVIEW SERIES OPTIONS

Choose a leg style and finish or a pedestal that best complements your décor. And for quick and easy ash disposal you can add an Ash drawer with the legs of your choice or the pedestal.



Cast Olympic Leg



Cast Coastal Leg



Lakeview steel leg



Cast Olympic Leg with Ash drawer



Pedestal with Ash drawer



Standard Pedestal

Choose the louver finish that is right for you.



Brushed Nickel



Standard Black

Add a 700-CFM blower with standard variable-speed control and heat-activated switch to optimize performance and comfort.



Choose the door trim style that is right for you.



Brushed Nickel
Nickel
Standard Black

COUNTRY COLLECTION OPTIONS

Choose a leg style and finish or a pedestal that best complements your décor. And for quick and easy ash disposal, you can add an Ash drawer.



Cast Olympic Leg



Cascade Leg

Only available in:
Standard Black



Standard Pedestal

Add an optional 700-CFM variable-speed blower. This blower has a switch to optimize performance and comfort with the option of thermal activation or manual control.



Choose a Traditional or Arch door style and the finish that's right for your home.



Traditional Door
Available on S160, S260,
& ST310

Brushed Nickel
Nickel-Plated
Standard Black



Arch Door
Available on S160, ST210

Brushed Nickel
Nickel-Plated
Standard Black

SPECIFICATIONS

SPECIFICATIONS (COUNTRY™ COLLECTION SERIES)

| | STRIKER™ S160 | PERFORMER™ ST210 | LEGACY™ S260 | CANYON™ ST310 |
|-------------------------------------|---------------|------------------|--------------|---------------|
| Width | 23-1/2" | 25-1/4" | 28" | 28-1/2" |
| Height: Cascade Legs (steel legs) | 27-1/2" | 30-3/8" | 33" | 38-1/2" |
| Height: Olympic Legs (cast legs) | 27-1/2" | 30-3/8" | 33" | 38-1/2" |
| Height: Pedestal | 31" | 33-7/8" | 36-1/2" | 41-1/2" |
| Depth (door opening to rear shield) | 17-3/4" | 21-3/4" | 21-1/4" | 23-1/2" |
| Approximate Weight: With Legs | 316 lbs. | 442 lbs. | 446 lbs. | 525 lbs. |
| Approximate Weight: With Pedestal | 310 lbs. | 436 lbs. | 440 lbs. | 519 lbs. |
| Stovepipe Diameter | 6" | 6" | 6" or 8"* | 6" or 8"* |

*Consult your dealer or professional installer for recommended chimney sizes for your application. S260 and ST310 require reducer when using 6" stovepipe.

CLEARANCES (COUNTRY™ COLLECTION SERIES)

| | Pipe Diameter | STRIKER™ S160 | | PERFORMER™ ST210 | | LEGACY™ S260 | | | | CANYON™ ST310 | |
|------|-----------------------------------|-----------------------|-----------------------|-----------------------|-----------------------|-----------------------|-----------------------|-----------------------|-----------------------|-----------------------|-----------------------|
| | | Single-Wall Connector | Double-Wall Connector | Single-Wall Connector | Double-Wall Connector | Single-Wall Connector | Double-Wall Connector | Single-Wall Connector | Double-Wall Connector | Double-Wall Connector | Double-Wall Connector |
| D=** | Flue Collar to Back Wall (US) | 16" | 10" | 16" | 10" | 18" | 12" | 23" | 16" | 12" | 12" |
| | Flue Collar to Back Wall (CANADA) | 19" | 13" | 19" | 13" | 18" | 12" | 23" | 16" | 12" | 12" |
| N=** | Flue Collar to Side Wall (US) | 21" | 18" | 24" | 21" | 26" | 23" | 28" | 25" | 24" | 24" |
| | Flue Collar to Side Wall (CANADA) | 24" | 21" | 25" | 22" | 26" | 23" | 28" | 25" | 24" | 24" |
| G=** | Flue Collar to Wall (US) | 18" | 13-1/2" | 18" | 15" | 21" | 21" | 23" | 22" | 18" | 18" |
| | Flue Collar to Wall (CANADA) | 21" | 16-1/2" | 21" | 18" | 21" | 21" | 23" | 22" | 18" | 18" |

HEARTH PROTECTION (COUNTRY™ COLLECTION SERIES)

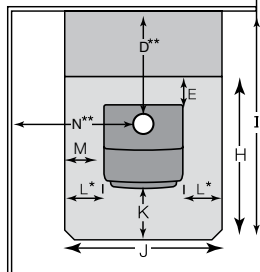
| | | | | | | | | | | | |
|----|--|---------|---------|---------|---------|---------|---------|---------|---------|---------|---------|
| E= | Back of Stove (US) | 0" | 0" | 0" | 0" | 0" | 0" | 0" | 0" | 0" | 0" |
| | Back of Stove (CANADA) | 8" | 8" | 8" | 8" | 8" | 8" | 8" | 8" | 8" | 8" |
| F= | Stove Corner to Wall | 9-3/4" | 5-1/2" | 9" | 6" | 11" | 11" | 13" | 12" | 7-1/4" | 7-1/4" |
| H= | Pad Depth Minimum (US) | 33-3/4" | 33-3/4" | 37-3/4" | 37-3/4" | 37-1/4" | 37-1/4" | 37-1/4" | 37-1/4" | 43-1/2" | 43-1/2" |
| | Pad Depth Minimum (CANADA) (E + Depth of Stove + K) | 43-3/4" | 43-3/4" | 47-3/4" | 47-3/4" | 47-1/4" | 47-1/4" | 47-1/4" | 47-1/4" | 51-1/2" | 51-1/2" |
| I= | Pad Depth to Back Wall (US) | 47-3/4" | 41-3/4" | 51" | 45" | 52-3/4" | 46-3/4" | 57-3/4" | 50-3/4" | 53" | 53" |
| | Pad Depth to Back Wall (CANADA) | 49-3/4" | 43-3/4" | 56" | 50" | 54-3/4" | 48-3/4" | 59-3/4" | 52-3/4" | 53" | 53" |
| J= | Pad Width Minimum (US) | 36" | 36" | 34-3/4" | 34-3/4" | 37-1/2" | 37-1/2" | 37-1/2" | 37-1/2" | 38" | 38" |
| | Pad Width Minimum (CANADA) | 39-1/2" | 39-1/2" | 41-1/4" | 41-1/4" | 44" | 44" | 44" | 44" | 44-1/2" | 44-1/2" |
| K= | Front of Stove (US) | 16" | 16" | 16" | 16" | 16" | 16" | 16" | 16" | 20" | 20" |
| | Front of Stove (CANADA) | 18" | 18" | 18" | 18" | 18" | 18" | 18" | 18" | 20" | 20" |
| L= | Measured from Door Opening (US) | 8" | 8" | 8" | 8" | 8" | 8" | 8" | 8" | 8" | 8" |
| M= | Measured from Sides of Unit (CANADA) | 8" | 8" | 8" | 8" | 8" | 8" | 8" | 8" | 8" | 8" |
| T= | Pad Depth to Corner (US) | 58-1/2" | 52" | 61-3/4" | 57-1/2" | 66" | 66" | 68-3/4" | 67-1/4" | 68" | 68" |
| | Pad Depth to Corner (CANADA) | 64-3/4" | 58-1/2" | 63-3/4" | 68" | 68" | 68" | 70-3/4" | 69-1/4" | 68" | 68" |

ALCOVES (COUNTRY™ COLLECTION SERIES)

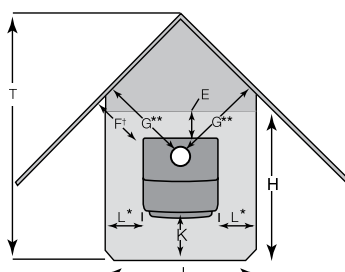
| | | | | | | | | | | | |
|-----|----------------|-----|-----|-----|-----|-----|-----|-----|-----|---------|---------|
| X = | Minimum Width | 48" | 44" | N/A | 48" | N/A | 54" | N/A | 64" | 56-1/2" | 56-1/2" |
| Y = | Maximum Depth | 48" | 48" | N/A | 48" | N/A | 48" | N/A | 48" | 48" | 48" |
| Z = | Minimum Height | 84" | 72" | N/A | 72" | N/A | 84" | N/A | 84" | 72" | 72" |

DIAGRAMS (COUNTRY™ COLLECTION & GRANDVIEW™ SERIES)

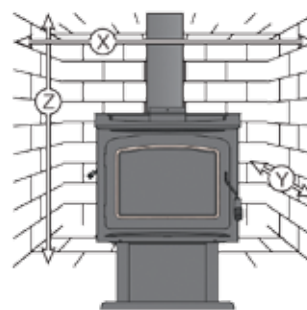
SIDE WALL/BACK WALL Fig. 1



CORNER Fig. 2



ALCOVE Fig. 3



F†= Measured from corner of stove heat shield.

*Measured from door opening.

**Clearances to flue are from the stove flue collar to combustibles.

PRODUCT DIMENSIONS (GRANDVIEW™ SERIES)

| | | GRANDVIEW 230 | GRANDVIEW 300 |
|--------------------|---------------|---------------|---------------|
| Width | | 25-1/8" | 26-1/2" |
| Height: | Lakeview Legs | 32-13/16" | 33-15/16" |
| | Coastal Legs | 32-1/2" | 33-5/8" |
| | Olympic Legs | 33-1/2" | 34-5/8" |
| | Pedestal | 35" | 36-1/8" |
| Depth | | 26-5/8" | 29-5/16" |
| Stovepipe Diameter | | 6" | 6" |

CLEARANCES (GRANDVIEW™ SERIES)

| | GRANDVIEW 230 | | | | GRANDVIEW 300 | | | |
|-------------------------------|--------------------------|--------------------------|------------------------------|------------------------------|--------------------------|--------------------------|------------------------------|------------------------------|
| | US Single-Wall Connector | US Double-Wall Connector | Canada Single-Wall Connector | Canada Double-Wall Connector | US Single-Wall Connector | US Double-Wall Connector | Canada Single-Wall Connector | Canada Double-Wall Connector |
| D**= Flue Collar to Back Wall | 16" | 10" | 16" | 10" | 16" | 11-5/8" | 16" | 11-5/8" |
| N**= Flue Collar to Side Wall | 22" | 20" | 22" | 20" | 25-1/8" | 23-1/8" | 25-1/8" | 23-1/8" |
| G**= Flue Collar to Wall | 16" | 15" | 16" | 15" | 17" | 16" | 17" | 16" |

HEARTH PROTECTION (GRANDVIEW™ SERIES)

| | | | | | | | | |
|--------------------------------|----------|----------|----------|----------|---------|----------|---------|----------|
| E = Back of Stove | 0" | 0" | 8" | 8" | 0" | 0" | 8" | 8" |
| F† = Stove Corner to Wall | 5-11/16" | 4-11/16" | 5-11/16" | 4-11/16" | 6" | 5" | 6" | 5" |
| H = Pad Depth Minimum | 38-5/8" | 38-5/8" | 49" | 47" | 41-1/8" | 41-1/8" | 51-1/8" | 51-1/8" |
| I = Pad Depth to Back Wall | 51" | 45" | 51" | 45" | 53-1/2" | 49-1/8" | 55-1/2" | 51-1/8" |
| J = Pad Width Minimum | 33" | 33" | 41-1/8" | 41-1/8" | 33" | 33" | 42-1/2" | 42-1/2" |
| K = Front of Stove | 16" | 16" | 18" | 18" | 16" | 16" | 18" | 18" |
| L = Measured from Door Opening | 8" | 8" | 12" | 12" | 8" | 8" | 12-3/8" | 12-3/8" |
| M = Measured to Sides of Unit | 4" | 4" | 8" | 8" | 3-5/8" | 3-5/8" | 8" | 8" |
| T = Pad Depth to Corner | 58-7/8" | 57-1/2" | 58-7/8" | 57-1/2" | 62-7/8" | 61-7/16" | 64-7/8" | 63-7/16" |

ALCOVES (GRANDVIEW™ SERIES)

| | | GRANDVIEW 230 | GRANDVIEW 300 |
|-----|----------------|---------------|---------------|
| X = | Minimum Width | 52" | 54" |
| Y = | Maximum Depth | 48" | 48" |
| Z = | Minimum Height | 72" | 72" |

IMPORTANT NOTES:

As with any heating appliance, fireplace or stove, this appliance is extremely hot during operation. Read and understand all operating instructions before using this appliance. For further information, consult your dealer. Actual performance may vary depending upon home design and insulation, ceiling heights, climate, condition and type of wood used, appliance location, burn rate, accessories chosen, chimney installation and how the appliance is operated. Grandview™ 230 approved for mobile home use. Diagrams, illustrations and photographs are not to scale—consult installation instructions. Product designs, materials, dimensions, specifications, colors and prices are subject to change or discontinuance without notice.

F†= Measured from corner of stove heat shield.

*Square-foot heating capacities and burn times are approximations only. Actual performance may vary depending upon home design and insulation, ceiling heights, climate, condition and type of wood used, appliance location, burn rate, accessories chosen, chimney installation and how the appliance is operated.

Clearances to flue are from the stove flue collar to combustibles. *Depending on the type of wood being burned and the amount of heat required.

**SEEKING THE
RIGHT STOVE
FOR THE
JOB? YOU'RE
GETTING
WARMER.**





© 2015 Innovative Hearth Products

785486M 05/15

Visit us online



IronStrike.us.com

