



Gas Fireplaces

MENDOTA

NORTH AMERICA'S LUXURY FIREPLACE

THE MENDOTA FIREPLACE EXPERIENCE

# Table of contents:

Why Mendota

FullView Modern Linear

FullView Modern

FullView

DXV Series

Designer Series

Mendota Flame

Selection Guide

Decorative Options

Sizing Diagram &  
Specifications

Additional Information

Design it online

To design your perfect fireplace  
or view videos of the fire in action  
visit [www.mendotaearth.com](http://www.mendotaearth.com)

NOTE: Not all fireplaces are shown with barrier screens. Flames may vary in appearance based on location and fuel type.



Model ML47 MOD with Black Traditions front, Driftwood and Natural River Rock fire bases, and Panoramic Black Porcelain Reflective interior lining





# A lifetime of comfort and luxury

Why is selecting the right hearth product so important? Purchases such as a luxury vehicle or high-end electronics will typically be replaced over time, but your gas fireplace will be part of your home forever. Choose the one you'll be proud to share with your family and friends—choose Mendota. Every detail, from the award-winning flames to the incredibly efficient BurnGreen™ system, was designed to help you create a warm and welcoming respite from the rigors of the day. A place of comfort, matched only by the peace of mind of Mendota's Lifetime Limited Warranty. After all, the memories you create around your Mendota fireplace will last a lifetime. We think your fireplace should, too.

Why Mendota

Model ML47 MOD with Brushed Chrome Traditions front, Liquid Clear Glass Diamonds fire base and Panoramic Metallic Midnight Porcelain Reflective interior lining



Model ML47 MOD with Brushed Chrome Wide Grace and Traditions paired fronts,  
Natural River Rock fire base and Panoramic Black Porcelain Reflective interior lining



# Luxury from a new perspective

With an expansive view and legendary Mendota flames, this is a fireplace of epic proportions.

The ever-contemporary FullView Modern Linear fireplace strikes the perfect balance of high style and high performance. You may never look at luxury the same way again.





Model ML47 MOD with Swedish Nickel Traditions front, White Tumbled Marble fire base and Panoramic Metallic Midnight Porcelain Reflective interior lining



Model ML47 MOD with Antique Copper Wide Grace and Traditions paired fronts, Antique Copper accent corners and dome rivets, Driftwood and Natural River Rock fire bases, and Panoramic Copper Porcelain Reflective interior lining



Model ML39 MOD with Swedish Nickel Wide Grace and Traditions paired fronts, Forest Oak fire base and Panoramic Metallic Silver Porcelain Reflective interior lining

Model ML39 MOD with Antique Copper Willowbrook front, Natural River Rock fire base and Panoramic Metallic Mocha Porcelain Reflective interior lining

## Create a spectacular view

Long on style, you can further enhance our panoramic fire with a selection of fronts to completely customize the look of your hearth. Choose from six stunning finishes including Black, Aged Leather, Antique Copper, Brushed Chrome, Swedish Nickel and Vintage Iron.



# Bold and clean

You want “wow,” Mendota FullView Modern Linear fireplaces deliver, with bold styling and clean lines that immediately let you know this is no ordinary fireplace. Etiquette tells us it’s impolite to stare, so don’t be surprised when friends suddenly master the art of the sidelong glance.

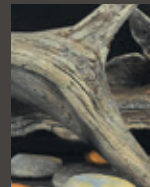
Featured fire base choices:



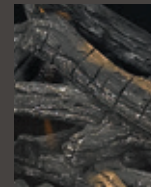
Black Glass Diamonds



Clear Ice Cubes



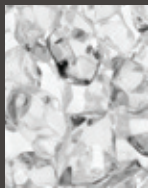
Driftwood



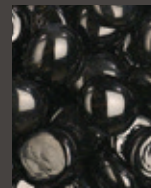
Forest Oak



Liquid Clear Glass



Liquid Clear Glass Diamonds



Midnight Black Glass



Natural River Rock

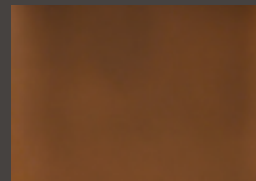


White Tumbled Marble

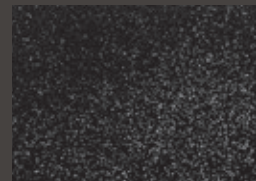
Panoramic porcelain reflective interior lining options:



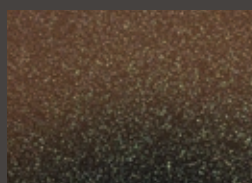
Black



Copper



Metallic Midnight



Metallic Mocha



Metallic Silver



Model ML47 MOD with Black Wide Grace and Traditions paired fronts, White Tumbled Marble fire base and Panoramic Metallic Mocha Porcelain Reflective interior lining



Model FV41 MOD with Aged Leather Wide Grace front, Natural River Rock fire base and Panoramic Black Porcelain Reflective interior lining

FullView Modern



Perfectly refined,  
thoroughly Mendota

Conventional log sets and brick linings give way to contemporary elements like glass fire stones, tumbled marble and natural river rock. Flames dance against a choice of panoramic panels that expand and amplify the nuances of the fire. And only FullView Modern fireplaces combine today's high-efficiency green technology with century-old Mendota craftsmanship.





Model FV41 MOD with Antique Copper Willowbrook front, Clear Ice Cubes fire base and Panoramic Metallic Silver Porcelain Reflective interior lining

# Make a statement

How do you turn cold contemporary into modern cool?

Add a Mendota FullView Modern fireplace to bring sleek warmth to understated décor. Suddenly, a simple wall becomes an architectural design element that draws the eye to the fireplace first. Simple yet stunning, it makes a confident statement in any room.



Model FV41 MOD with Vintage Iron Traditions front, Antique Copper accent corners, Black dome rivets, Driftwood fire base and Panoramic Metallic Silver Porcelain Reflective interior lining





Model FV41 MOD with Antique Copper and Brushed Chrome Grace Arch layered fronts, Midnight Black Glass fire base and Black Non-Reflective interior lining



# Redefining luxury

Is it bringing your fire to life with the touch of a remote control? Is it creating a design that perfectly reflects your personal style? Is it knowing you've made a wise investment in something you'll see and enjoy every day, guaranteed for a lifetime of beauty and comfort? Luxury is how you define it.

Featured fire base choices:



Black Glass Diamonds



Clear Ice Cubes



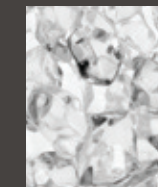
Driftwood



Forest Oak



Liquid Clear Glass



Liquid Clear Glass Diamonds



Midnight Black Glass



Natural River Rock

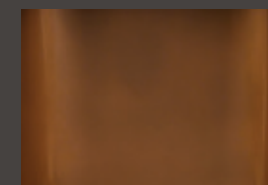


White Tumbled Marble

Interior lining options:



Panoramic Black Porcelain Reflective



Panoramic Copper Porcelain Reflective



Panoramic Metallic Silver Porcelain Reflective



Black Non-Reflective

Model FV41 MOD with Swedish Nickel Grace layered fronts, Forest Oak fire base and Panoramic Black Porcelain Reflective interior lining





Model FV46 with Traditions front

# Luxury with every look

Thoughtful gazes or fleeting glances—every look at your Mendota FullView gas fireplace reminds you of why you chose the best. Cleaning ashes and stacking wood become distant memories. With the touch of a button, you can change the entire mood of your room or the outlook on your day. Our fires tend to

your needs, not the other way around. Then there's the quiet confidence of knowing every Mendota fire burns with a century-old tradition of craftsmanship and gas technology. You're also in complete control of design elements from fronts to doors, even interior linings, so you can build a fireplace that fits your exact style. Go ahead, take another look. You've earned it.





Model FV41 with Stella front



Model FV34 with Wide Grace front

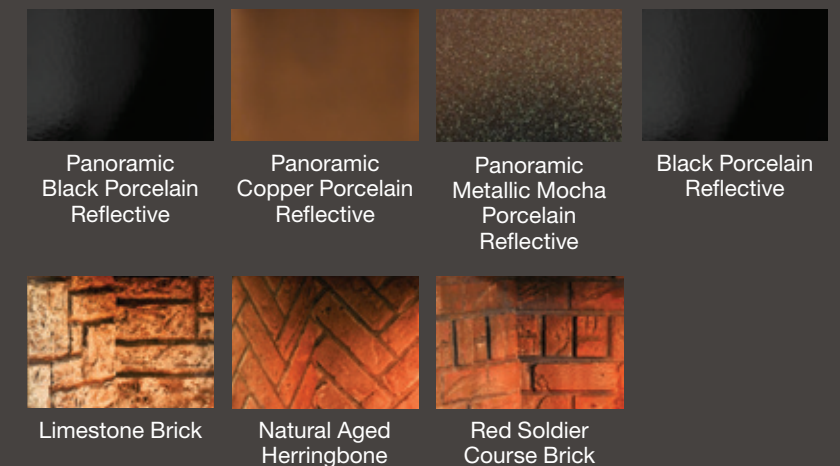


Model FV41 with Willowbrook Arch front

## Simplicity from a FullView perspective

Simple can be stunning. Case in point—your Mendota FullView fireplace, right out of the carton, offering an uninterrupted view of the beautiful fire.

Interior lining options:







Model FV41 Arch with Traditions Arch front



Model DXV45 DT4 with Bentley doors

## Luxury that lasts

Trends may come and go, but the classic design of the ever-popular Mendota DXV Series fireplace is a timeless addition to any home. While many gas fireplaces are stamped out in a cookie cutter approach, each Mendota DXV fireplace is handcrafted to give you a lifetime of comfort and durability. Our DXV fireplaces have won Best of Show honors at the National Hearth Products Association Expo and have been listed as a Best Buy value by Consumers Digest. And now, the classic DXV fireplace combines with Mendota's BurnGreen™ technology to provide the ultimate in style, convenience and green efficiency.





Model DXV35 DT4 with Millennia front



Model DXV45 DT4 with Andover doors and optional lattice overlay



Model DXV45 DT4 with Prairie doors



# Transform spaces large and small

Greenbriar makes a big statement in larger rooms

With its dramatic Georgian arch, the Greenbriar replicates the beautiful fireplaces of America's first families. It is bold and distinctive, open and inviting—the perfect showpiece for rooms that deserve to be shown. The Greenbriar can go from a roaring 50,000 BTUH log fire to the romantic, gentle flames and glowing embers of a 15,800 BTUH late night campfire—all with just a touch.



Greenbriar with Winthrop cast iron front

Designer Series

# With Chelsea, inspiration is right around the corner

The inspired design of the Chelsea fireplace gracefully transforms your space, in ways you never thought possible. Place it at eye level in the family game room to bring movement and light to an otherwise blank wall—with no hearth required. Beneath its charming exterior, the Chelsea is an ANSI/AGA 27,000 to 6,750 BTUH high-efficiency wall furnace that will provide plenty of adjustable warmth to any room.



Chelsea with Hanover cast iron front and Colonial doors





# Focus on the fire

Mendota's beautiful log fire is the result of years of research and development. It begins with a careful selection of actual field logs, hand-molded to capture every intricate detail. Each log is hand-painted

using a palette of eight colors and arranged to create the exact look and feel of a wood log fire in its most beautiful burning stages. Go from a roaring fire with lots of heat to the lazy flames of a late night campfire, all with the touch of a button. In the end, there's just you and the beautiful fire—the way the experience was always meant to be.



# A guide to selecting your favorite front

Explore the charts below, or visit [www.mendotahearth.com](http://www.mendotahearth.com) to design your perfect fireplace online.

FRONTS & DOORS	Grace Narrow Front	Grace Wide Front	Grace Narrow Arch	Grace Wide Arch	Stella Front
FullView ML39 MOD Linear	—	●●●●●●●●	—	—	—
FullView ML47 MOD Linear	—	●●●●●●●●	—	—	—
FullView 41 MOD	●●●●●●●●	●●●●●●●●	●●●●●●●●	●●●●●●●●	●●●●●●●●
FullView 34	●●●●●●●●	●●●●●●●●	●●●●●●●●	●●●●●●●●	●●●●●●●●
FullView 41	●●●●●●●●	●●●●●●●●	●●●●●●●●	●●●●●●●●	●●●●●●●●
FullView 41 Arch	—	—	●●●●●●●●	●●●●●●●●	—
FullView 46	●●●●●●●●	●●●●●●●●	●●●●●●●●	●●●●●●●●	●●●●●●●●

FullView MOD Linear Grace Front can be paired with either Traditions or Willowbrook Fronts. See website for details.

FRONTS & DOORS	Traditions Front	Traditions Arch	Willowbrook Front	Willowbrook Arch	Duchess Front
FullView ML39 MOD Linear	●●●●●●●●	—	●●●●●●●●	—	—
FullView ML47 MOD Linear	●●●●●●●●	—	●●●●●●●●	—	—
FullView 41 MOD	●●●●●●●●	—	●●●●●●●●	●●●●●●●●	●●●●●●●●
FullView 34	●●●●●●●●	—	●●●●●●●●	●●●●●●●●	—
FullView 41	●●●●●●●●	—	●●●●●●●●	●●●●●●●●	●●●●●●●●
FullView 41 Arch	—	●●●●●●●●	—	●●●●●●●●	—
FullView 46	●●●●●●●●	—	●●●●●●●●	●●●●●●●●	—

FullView MOD Linear Grace Front can be paired with either Traditions or Willowbrook Fronts. See website for details.

FRONTS & DOORS	Willow Doors	Homestead Doors	Pioneer Doors
FullView 41 MOD	●●●●●●●●	●●●●●●●●	●
FullView 34	●●●●●●●●	●●●●●●●●	●
FullView 41	●●●●●●●●	●●●●●●●●	●
FullView 46	●●●●●●●●	●●●●●●●●	●

Consult your Mendota dealer for availability of fronts, doors and options by model. Products, specifications and prices are subject to change without notice.

FRONTS & DOORS	Bentley Doors	Andover Doors	Andover Overlay	Prairie Doors	Prairie Overlay
FullView 41 MOD	●●●●●●●●	—	—	—	—
FullView 34	●●●●●●●●	●	—	●	—
FullView 41	●●●●●●●●	—	—	—	—
FullView 41 Arch	●●●●●●●●	—	—	—	—
FullView 46	●●●●●●●●	—	—	—	—
DXV35	●●●●●●●●	●	●●●●●●●●	●	●●●●●●●●
DXV42	—	●	●●●●●●●●	●	●●●●●●●●
DXV45	●●●●●●●●	●	●●●●●●●●	●	●●●●●●●●
DXV60	●●●●●●●●	●	●●●●●●●●	●	●●●●●●●●

FRONTS & DOORS	Deerfield Front	Tuscany Front	Millennia Front	Victoria Front
DXV35	●	●●●●●●●●	●●●●●●●●*	●●●●●●●●
DXV42	●	●●●●●●●●	●●●●●●●●*	●●●●●●●●
DXV45	●	●●●●●●●●	●●●●●●●●*	●●●●●●●●
DXV60	●	●●●●●●●●	●●●●●●●●*	●●●●●●●●

\*Millennia Front is available in Black, Classic Brass, Full Brass and Contemporary Silver; DXV60 available in Black and Gold only.

FRONTS & DOORS	Winthrop Front	Ashton Front	Filigree Overlay	Glass Frame Overlay	Huntington Doors
Greenbriar	Cast Iron	●●●●●●●●*	●●●●●●●●*	●●●●●●●●*	●●●●●●●●*

\*Gold color is Antique Gold.

FRONTS & DOORS	Hanover Front	Ashton Front	Filigree Overlay	Glass Frame Overlay	Cambridge Doors
Chelsea	Cast Iron	●●●●●●●●*	●●●●●●●●*	●●●●●●●●*	●●●●●●●●*

\*Gold color is Antique Gold; doors are also available in Colonial Cast Iron.

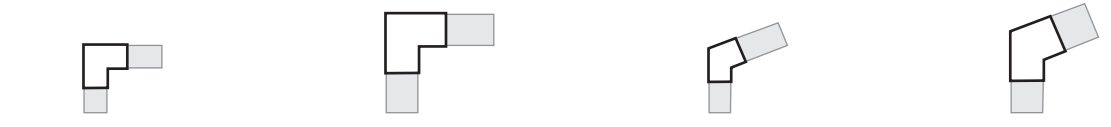
## COLOR KEY:


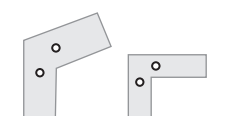
Black	Antique Copper	Gold	Hammered Leather	Vintage Iron
Aged Leather	Brushed Chrome	Gun Metal	Swedish Nickel	Black Onyx




# Decorative options

Distinctive details in a range of finishes let you create a look that's yours, and yours alone.

ACCENT CORNERS				
	Grace Narrow Front	Grace Wide Front	Grace Narrow Arch	Grace Wide Arch
FullView ML39 MOD Linear	—	●●●●●●●●	—	—
FullView ML47 MOD Linear	—	●●●●●●●●	—	—
FullView 41 MOD	●●●●●●●●	●●●●●●●●	●●●●●●●●	●●●●●●●●
FullView 34	●●●●●●●●	●●●●●●●●	●●●●●●●●	●●●●●●●●
FullView 41	●●●●●●●●	●●●●●●●●	●●●●●●●●	●●●●●●●●
FullView 41 Arch	—	—	●●●●●●●●	●●●●●●●●
FullView 46	●●●●●●●●	●●●●●●●●	●●●●●●●●	●●●●●●●●

ACCENT CORNERS			DOME RIVETS		
	Traditions Front	Traditions Arch			
FullView ML39 MOD Linear	●●●●●●●●	—	FullView ML39 MOD Linear	●●●●●●●●	
FullView ML47 MOD Linear	●●●●●●●●	—	FullView ML47 MOD Linear	●●●●●●●●	
FullView 41 MOD	●●●●●●●●	—	FullView 41 MOD	●●●●●●●●	
FullView 34	●●●●●●●●	—	FullView 34	●●●●●●●●	
FullView 41	●●●●●●●●	—	FullView 41	●●●●●●●●	
FullView 41 Arch	—	●●●●●●●●	FullView 41 Arch	●●●●●●●●	
FullView 46	●●●●●●●●	—	FullView 46	●●●●●●●●	

Dome Rivets can also be used with the Accent Corners.

ACCENT BARS & ANDIRONS					Andirons
	Grace Narrow Front	Grace Wide Front	Grace Narrow Arch	Grace Wide Arch	
FullView 41 MOD	●●●●●●●●*	●●●●●●●●*	●●●●●●●●*	●●●●●●●●*	●
FullView 34	●●●●●●●●*	●●●●●●●●*	●●●●●●●●*	●●●●●●●●*	—
FullView 41	●●●●●●●●*	●●●●●●●●*	●●●●●●●●*	●●●●●●●●*	●
FullView 41 Arch	—	—	●●●●●●●●*	●●●●●●●●*	●
FullView 46	●●●●●●●●*	●●●●●●●●*	●●●●●●●●*	●●●●●●●●*	—
Greenbriar	—	—	—	—	●
Chelsea	—	—	—	—	●

\*Antique Copper, Brushed Chrome and Swedish Nickel accent bars are special order. Andiron styles may vary. Check with your Mendota dealer to see which options are available for your model.

Consult your Mendota dealer for availability of fronts, doors and options by model. Products, specifications and prices are subject to change without notice.

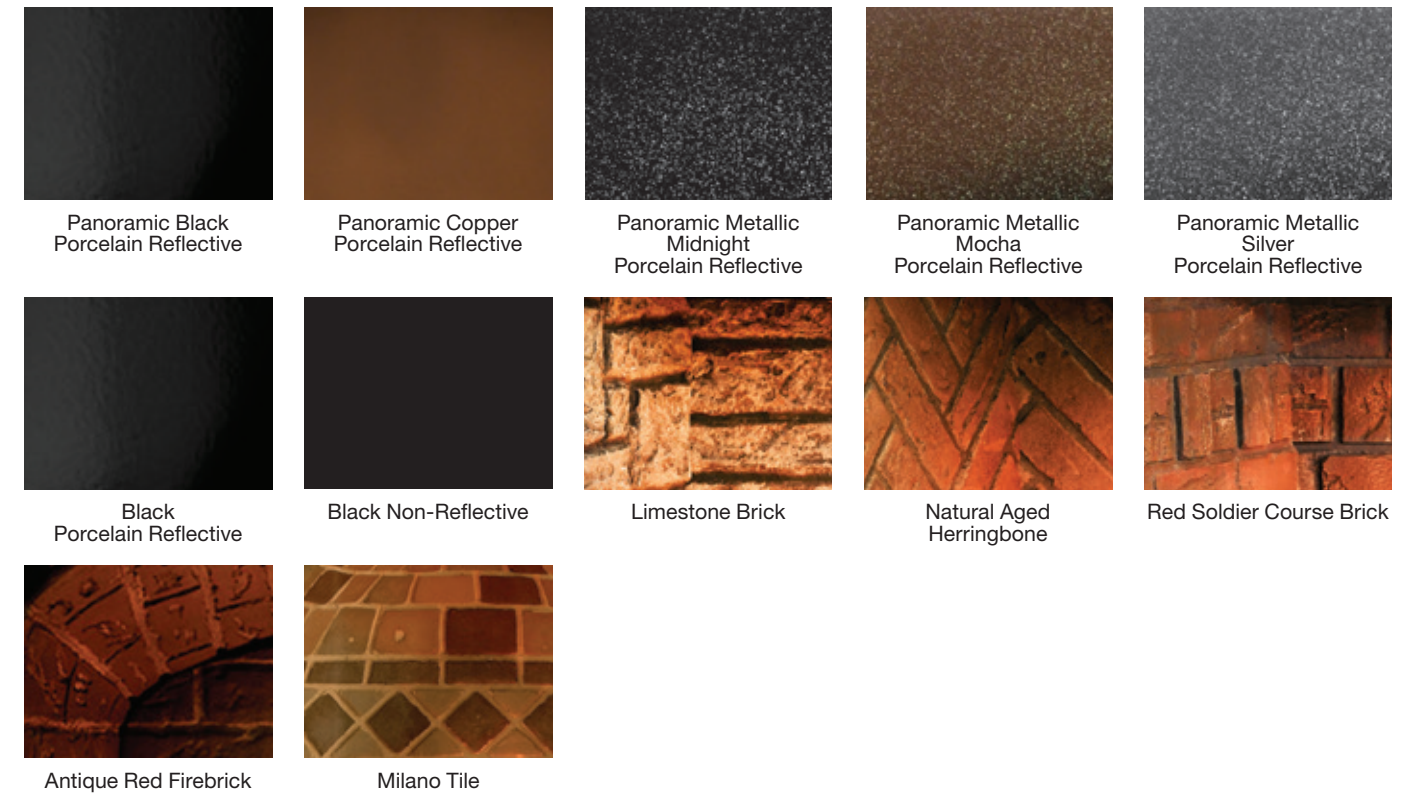
# Metal finish options

Find just the right front or door finish that complements your taste, from sophisticated to rugged.



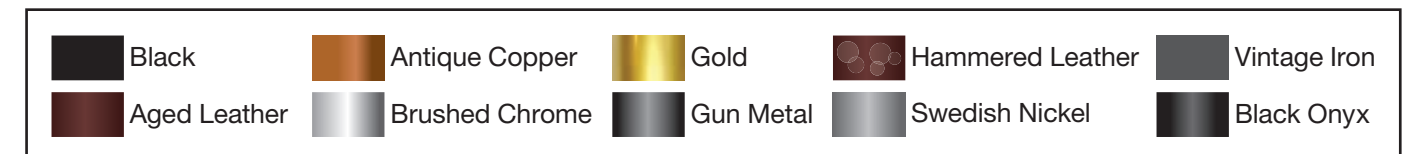
# Interior lining options

Classic brick? Contemporary mocha? You pick the perfect backdrop for the beautiful Mendota flames.



NOTE: Lining and finish options vary based on fireplace model. See [www.mendotaearth.com](http://www.mendotaearth.com) for complete details.

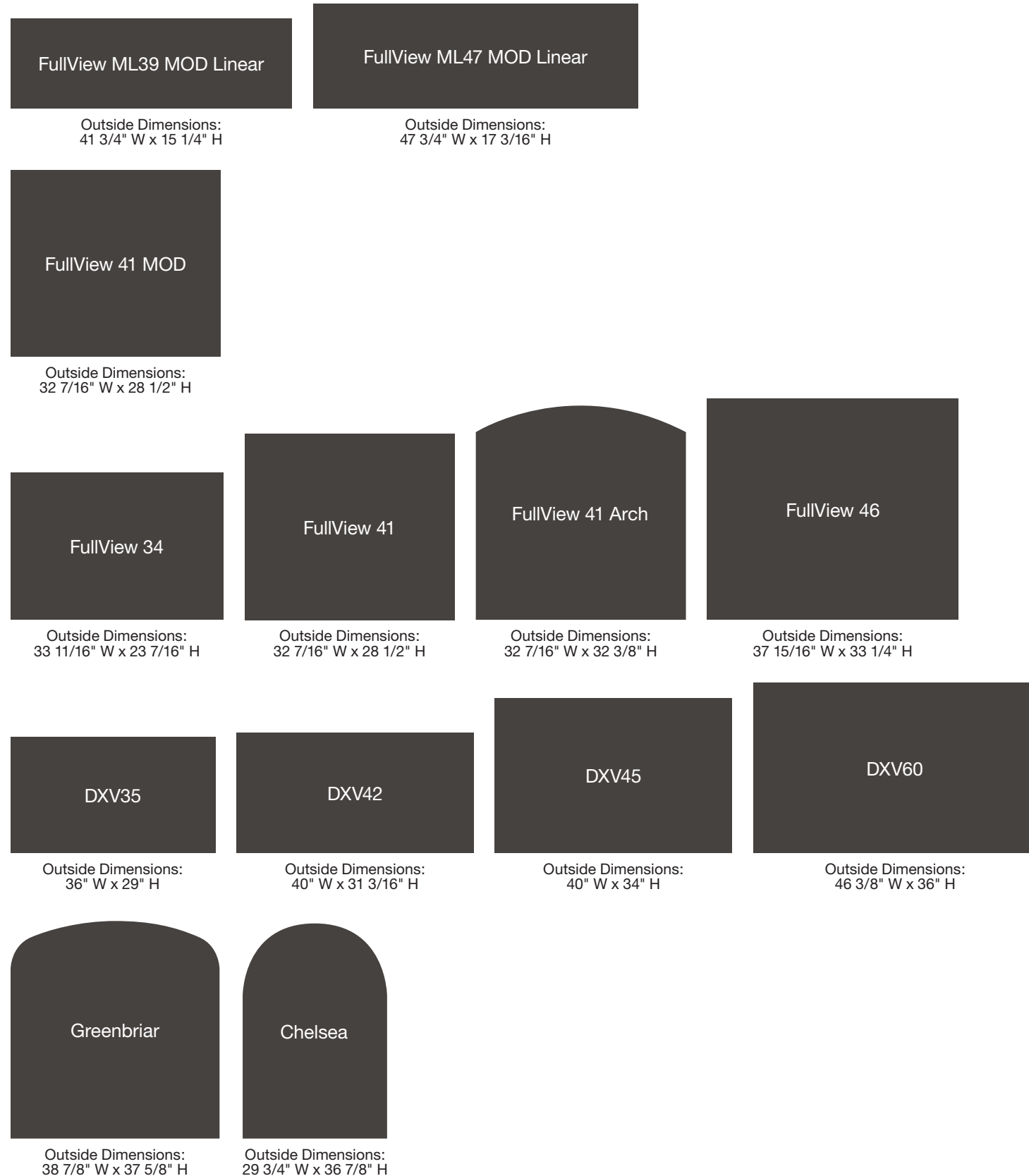
### COLOR KEY:





# Mendota gas fireplace sizing diagram

When it comes to finding the right gas fireplace for your home, aesthetics and heat output are equally important considerations. This chart provides a quick reference for relative scale, but your Authorized Mendota Dealer will help you choose the perfect size based on your climate, floor plan and lifestyle.



# Mendota gas fireplace specifications

Find everything you need to know about heat output, efficiencies and basic dimensions with a quick glance. Need more detailed specs or installation information? Check the owner's manual or talk with your Authorized Mendota Dealer.

## FullView Modern Linear

	Glass Size	Natural Gas (BTUH)	LP Gas (BTUH)	CSA P.4 Efficiency
FullView ML39 MOD Linear	40 3/4" W x 14 3/16" H	23,000-34,250	28,000-34,250	77.3%
FullView ML47 MOD Linear	46 3/4" W x 16 1/4" H	25,000-41,000	24,000-41,000	71.6%

## FullView Modern

	Glass Size	Natural Gas (BTUH)	LP Gas (BTUH)	CSA P.4 Efficiency
FullView 41 MOD	31 1/2" W x 28 1/4" H	18,000-29,000	22,000-29,000	73.9%

## FullView

	Glass Size	Natural Gas (BTUH)	LP Gas (BTUH)	CSA P.4 Efficiency
FullView 34	31 1/2" W x 22 3/8" H	9,260-32,000	12,707-32,000	77.4%
FullView 41	31 1/2" W x 28 1/4" H	13,000-40,000	15,000-40,000	72.7%
FullView 41 Arch	31 1/2" W x 32 1/16" H	11,622-40,000	15,152-40,000	77.2%
FullView 46	37 1/4" W x 33" H	13,450-45,500	15,840-45,500	72.3%

## DXV Series

	Glass Size	Natural Gas (BTUH)	LP Gas (BTUH)	CSA P.4 Efficiency
DXV35	31 5/16" W x 19 5/16" H	10,000-33,000	13,000-33,000	76.4%
DXV42	35 5/8" W x 19 9/16" H	27,000-40,000	22,000-38,500	79%*
DXV45	35 5/8" W x 24 3/8" H	10,000-45,000	15,000-40,000	74.9%
DXV60	42 1/4" W x 26 9/16" H	10,000-60,000	9,500-59,000	71.5%*

## Designer Series

	Glass Size	Natural Gas (BTUH)	LP Gas (BTUH)	CSA P.4 Efficiency
Greenbriar	31 7/16" W x 32 3/4" H	15,800-50,000	16,200-50,000	74.8%
Chelsea	22" W x 31 13/16" H	6,750-27,000	7,000-25,000	70.4%

\*All efficiency ratings are based on the CSA P.4 test method for natural gas, with the exception of the DXV42 and DXV60 which are based on AFUE ratings for natural gas.

Products, specifications and prices are subject to change without notice.



## Mendota sealed combustion, direct vent technology

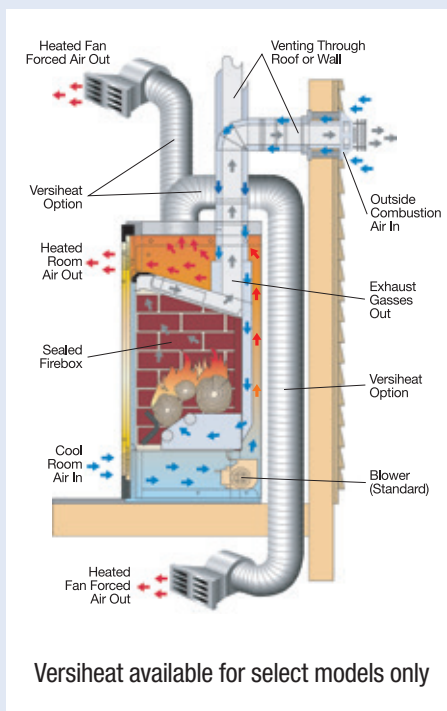
### With Versiheat—forced air heat transfer system (optional)

Mendota's sealed combustion, direct vent system draws air for combustion from outside the home into a sealed firebox. Exhaust is expelled through a separate vent. Room air is heated and recirculated. The system keeps warm air in and cold air out. This assures high air quality, maximum efficiency and trouble-free operation in today's tight homes. Versiheat moves heat from your fireplace to other areas in your home. Mendota fireplaces have connections for two Versiheat kits to allow the transfer of heat to two other areas. Heat is moved through ducts with their own blowers and thermostats. This optional system provides heat to more than one room and moves unwanted heat out of the fireplace.

Ask your dealer about Mendota heat management solutions, or visit [www.mendotahearth.com](http://www.mendotahearth.com)

**Note:** The snapdisc blower activation thermostat supplied with the Versiheat kit can only be installed on DXV35 TimberFire, DXV42 TimberFire, DXV60, DXV35 DT4 (PF1 or PF2) and DXV45 DT4 (PF1 or PF2) models. The snapdisc thermostat CANNOT be installed on M50, FV34, FV41, FV41 Arch, FV41 MOD, FV46, ML39 MOD or ML47 MOD models.

**Special note for PF2 equipped models:** The remote Millivolt wall thermostat CANNOT be installed on any PF2 electronic ignition control equipped models including DXV35 DT4 LX, DXV45 DT4 LX, FV34, FV41, FV41 Arch, FV41 MOD, FV46, ML39 MOD or ML47 MOD.



## With Mendota, beauty and safety go hand-in-hand

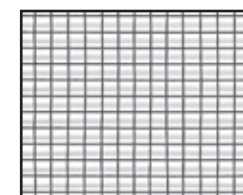
### Pair education with our factory-provided screens to enjoy your Mendota, safely

Nothing brings families together like a Mendota fireplace in a favorite gathering spot. That's why we make fireplace safety a top priority. Together, we can make sure you and your loved ones enjoy every moment around the hearth without worry.

First, take a moment to educate children about the dangers of fire, and teach them to never touch the hot glass or metal surfaces surrounding the fireplace.

To further promote safe use, all Mendota products are in compliance with government safety screen regulations. Each safety screen has been carefully engineered to keep little hands away from hot glass surfaces while still allowing you to fully enjoy the view of the beautiful Mendota flames.

Keep in mind that while the screens provide an effective safety barrier from the glass, the screens themselves can retain heat for some time after turning off the fire. Be sure to let your fireplace cool completely before attempting to touch it.



Select fronts, including Grace and Willowbrook, feature our new micro safety screen that virtually disappears once installed over the fireplace.



## BurnGreen™ comfort control, with just a simple touch



Mendota's environmentally friendly, sealed combustion, direct vent fireplaces with the BurnGreen™ system are designed to meet exacting governmental EPA standards, as well as national LEED® and NAHB guidelines for high efficiency and low emissions. BurnGreen™ means burning smarter, giving you choices to conserve fuel and help the environment. It allows you to easily:

- Turn the pilot and burners on and off
- Adjust the heat output to your comfort
- Turn the blowers on and off or adjust blower air output
- Turn the FireLight on and off

You can accurately control room temperature using the remote control's smart digital thermostat. Simply set the temperature, and the burner will automatically turn down as room temperature nears the set temperature, eliminating "spikes."

NOTE: Remotes vary by model. Ask your Authorized Mendota Dealer which remote is included with your Mendota fireplace.

### Save energy by "zone heating" with a Mendota gas fireplace

#### Heat the room you use the most

With an energy efficient Mendota gas fireplace in the room you use the most, you can turn down the central heat, enjoy the beauty, warmth and fascination of Mendota's award-winning log fire, and save valuable dollars on your energy bill.

### FireLight accents your hearth, with or without flames

#### Included with select models

Use our FireLight accent lighting system when the fire is on to add extra drama and detailing to the interior lining and fire base. Or enjoy the ambiance and gentle glow without flames or heat during warmer months.

## See why Mendota fireplaces are among the most efficient in the industry



### Get the lowdown on high efficiency to make the smart choice

Much like comparing miles per gallon when buying a new vehicle, fireplace efficiency ratings tell you a lot about how much gas a particular fireplace will consume as you use it. But beware—not all fireplace manufacturers use the same rating system.

The best way to determine the efficiency of a gas fireplace is to ask for its rating based on the CSA P.4 test method. This accurate measurement reflects the overall operation of the fireplace, taking into account its use and performance throughout the entire heating season. Tests using this Canadian standard for measuring annual fireplace efficiency show that while some units operate in the 30% range, the better units range from 70-90%.

With P.4 fireplace efficiency ratings ranging from 70.4% to 82.0%, Mendota fireplaces are among the industry's most efficient and represent a smart choice for your home. Download all independent fireplace ratings from the Canadian P.4 EnerGuide website at [www.oe.nrcan.gc.ca](http://www.oe.nrcan.gc.ca) (search for Mendota).





Model ML47 MOD with Brushed Chrome Willowbrook front, Driftwood and Natural River Rock fire bases, and Panoramic Metallic Midnight Porcelain Reflective interior lining

## Your home deserves a Mendota

Whether you're building or remodeling, it's important to help your builder pick a gas fireplace that complements your home and your style. Why?

- A fireplace is a once-in-a-lifetime purchase that's permanently installed in your home. It's not something that you replace every so often like a car or television.
- A fireplace is the center of attention in the most important room in your home—something you'll see and enjoy every day.
- A fireplace is a product from which you expect a high degree of performance and safety.

# MENDOTA

NORTH AMERICA'S LUXURY FIREPLACE

JOHNSON GAS APPLIANCE CO.  
Gas Specialists Since 1901  
520 E Avenue NW  
Cedar Rapids, IA 52405

MENDOTA HEARTH DIVISION  
High Performance Fireplaces  
520 E Avenue NW  
Cedar Rapids, IA 52405

[www.mendotahearth.com](http://www.mendotahearth.com) • [info@mendotahearth.com](mailto:info@mendotahearth.com)



Over a century of gas expertise



[facebook.com/mendotahearth](https://facebook.com/mendotahearth)

Your Exclusive Mendota Dealer:



Scan the code to design your perfect Mendota fireplace